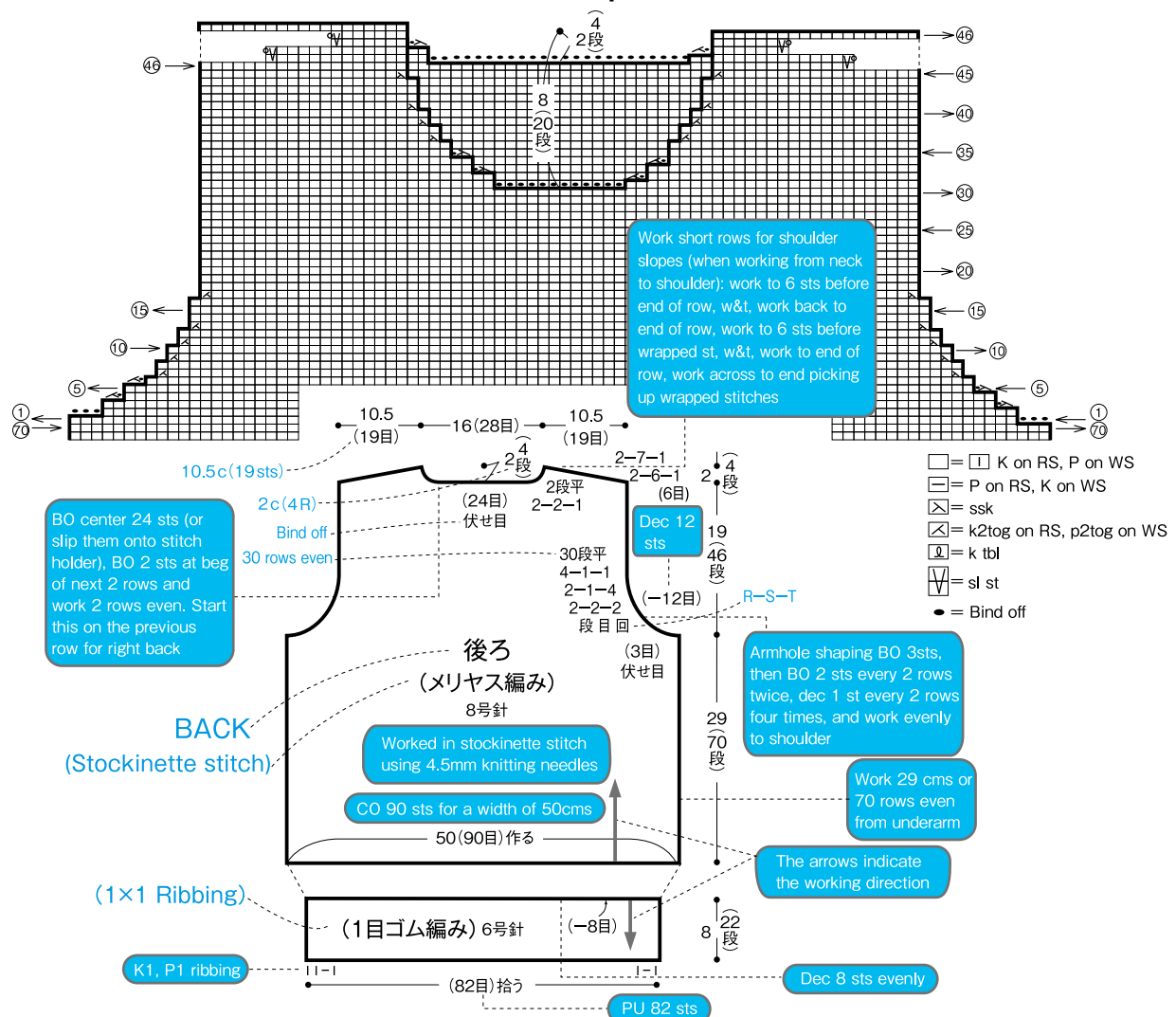


# <Tips for working with Japanese charts and schematics>

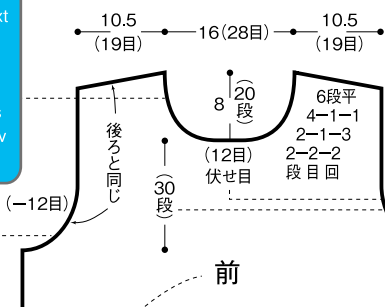
- \* Japanese stitch patterns are charted by showing all the symbols from the RS, therefore the stitches worked from the WS is worked so that they will appear accordingly on the RS
- \* Number of rows for pattern repeats are indicated along the right hand side of the chart and the number of stitches along the bottom
- \* The beginning of a stitch pattern may differ depending on size. In such cases, the beginning for each size is indicated with an arrow at the bottom of the chart.
- \* Measurements for Japanese schematics is based on the metric system; i.e., centimeters (2.5cm = 1 inch, 10cms = 4 inches)
- \* Numbers given without parenthesis are measurements. Those in parenthesis indicate the number of stitches or rows
- \* Be sure to check needle size based on its metric size.
- \* Stitches that are cast on / picked up are counted as one row
- \* When working direction for the main part of the piece and ribbing are facing opposite directions, this means that the main part is worked first with provisional cast on and the ribbing is added later by picking up stitches from the cast on stitches.
- \* When the front and back are worked separately, selvage stitch for joining the pieces are already included in the stitch count.

## How to read Japanese charts



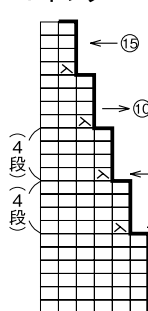
Neckline shaping:  
BO 2 sts at the beg of next 2 rows twice, dec 1 st at the beg of next 2 rows 3 times, dec 1 st every 4th row once and work 6 rows even. Start this on the prev row for right front

Armhole shaping: Dec similarly as for back and work short-rows for shoulder slope. This will occur on the next row for left shoulder



FRONT  
Y neck

Yネック



Dec 1st

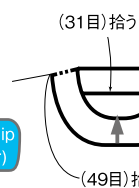
Number of rows from armhole shaping to neckline shaping

After decreasing 1 st, dec 1 st every 4th row 12 times, then dec 1 st every 6th row once and work 6 rows even

## NECKBAND

衿 (1目ゴム編み) 6号針

(1×1 Ribbing)



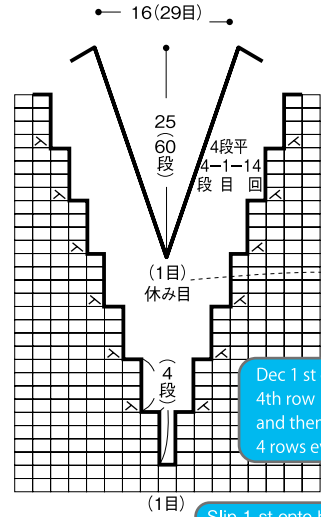
Pick up and knit 31 sts from back neck

Work neckband in the round

Pick up and knit 49 sts from front neck

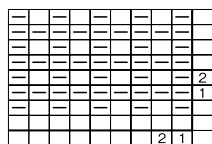
Vネック

V neck



## 模様編み

## PATTERN STITCH



後ろ ↑ 前

編み始め

Beginning of row

Beginning of row for each piece

- = 1 K on RS, P on WS
- = P on RS, K on WS
- ⊠ = ssk
- ⊠ = k2tog on RS, p2tog on WS
- ⊠ = k tbl
- = Bind off

## Abbreviations

- BO=bind off
- CO=cast on
- PU=pick up
- R-S-T=rows-sts-times
- c=cms
- ✂=knitting needles
- 🪡=crochet hook

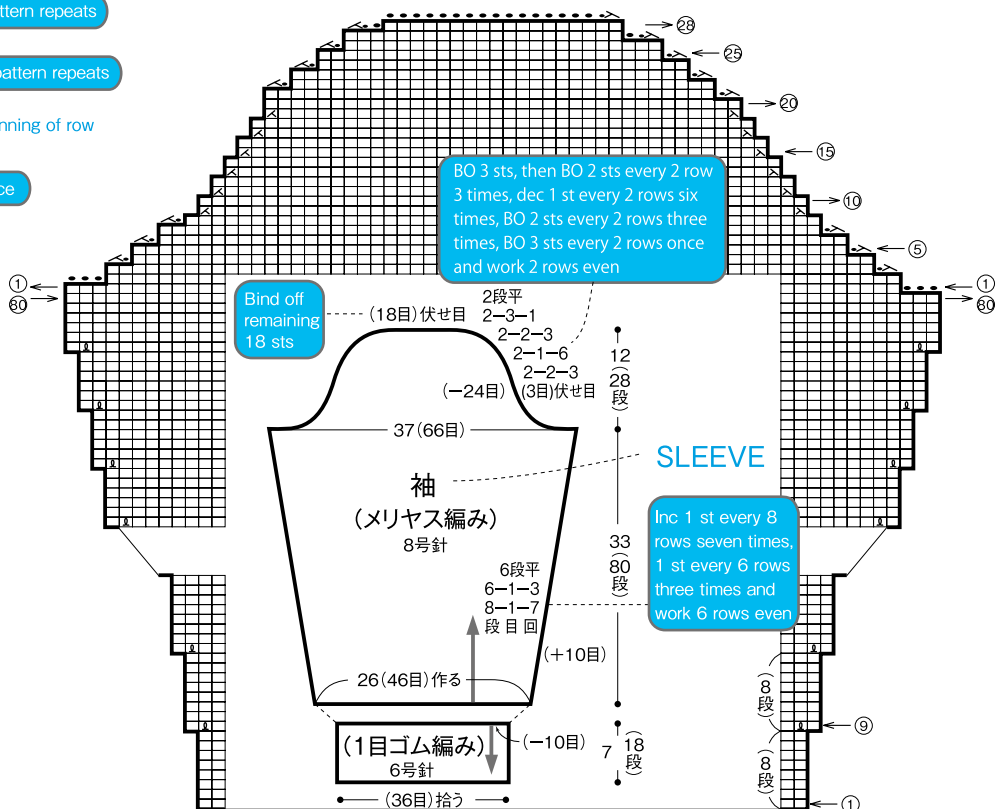
## Rules for various types of lines

- Outline
- - - Center line
- · - · - To be worked in the round
- - - - - To be folded
- Line for design, change of stitch pattern
- - - - - Guideline

Shaping is to be done similarly for both sides. However, inc or dec involving more than 2 sts cannot be done on both sides on the same row.

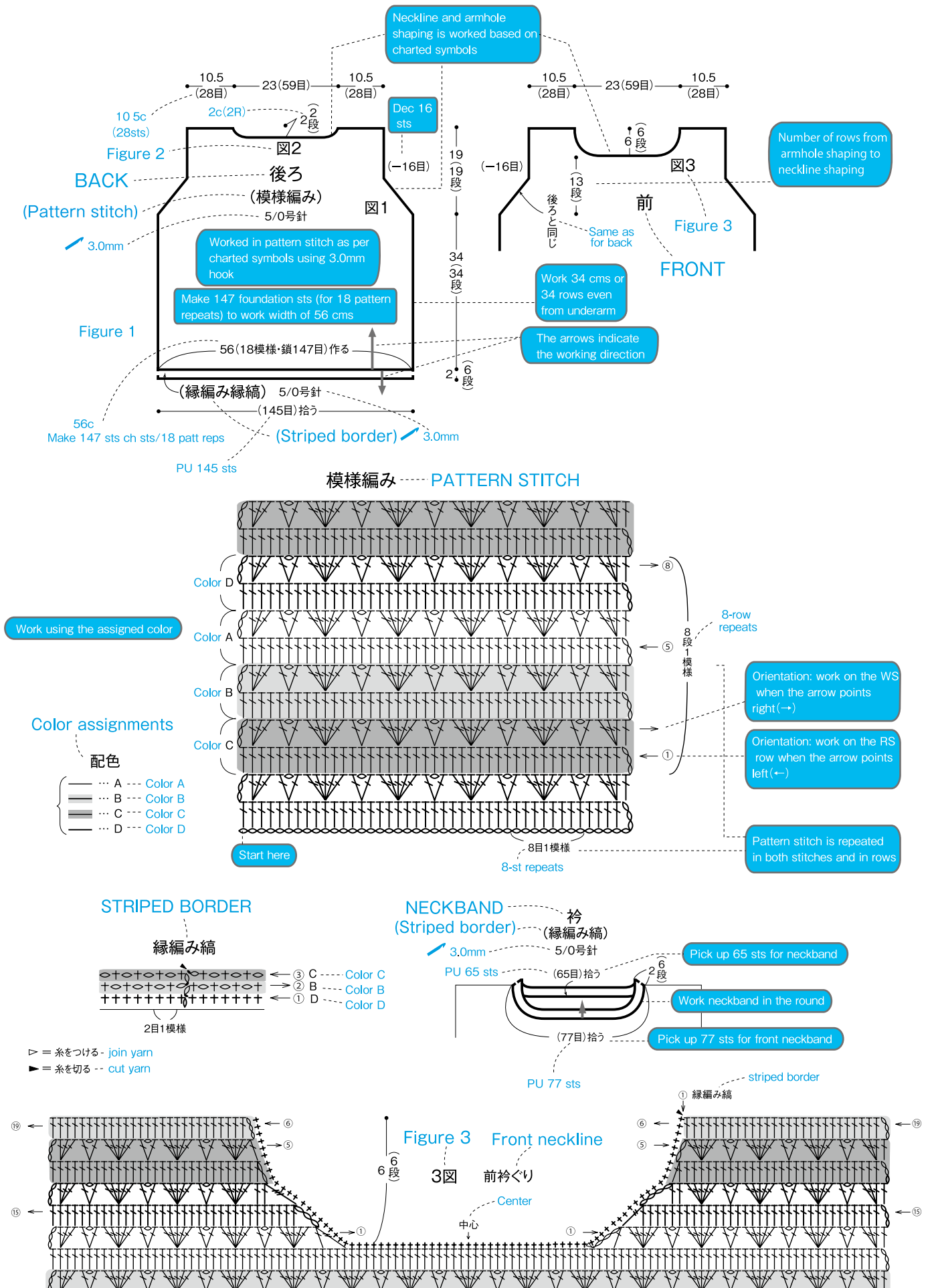
In this case, it will be done at the beg of the following row.

Neckline shaping will begin on the right side one row before the left side.



## SLEEVE

# How to read Japanese crochet charts



## Basic stitches

	ch	chain stitch
	sl st	slip stitch
	sc	single crochet
	hdc	half double crochet
	dc	double crochet
	tr	treble (triple) crochet
	dtr	double treble crochet
	tr tr	treble (triple) treble crochet

## Variations of single crochet

	twisted sc	twisted single crochet
	spike rev sc	spike reverse single crochet
	rev sc	reverse single crochet (crab stitch)
	(when worked flat) sc into blo for every row	(when worked flat) single crochet into back loop only for every row
	(when worked flat) sc into blo in 1st row and flo in 2nd, rep these two rows	(when worked flat) single crochet into back loop only in 1st row and front loop only in 2nd, repeat these two rows
	(when worked flat) hdc into blo in 1st row and flo in 2nd, rep these two rows	(when worked flat) half-double crochet into back loop only in 1st row and front loop only in 2nd, repeat these two rows
	(when worked flat) dc into blo in 1st row and flo in 2nd, rep these two rows	(when worked flat) double crochet into back loop only in 1st row and front loop only in 2nd, repeat these two rows

## Puff stitch (Bobble)

	hdc3tog into same st	half-double crochet 3 stitches together into same stitch
	hdc3tog into sp	half-double crochet 3 stitches together into space
	variation of hdc3tog into same st	variation of half-double crochet 3 stitches together into one stitch (Instead of drawing through all loops on stitches, draw through so that the 1st loop on hook remains, yo and then draw through the last 2 loops on
	variation of hdc3tog into same sp	variation of half-double crochet 3 stitches together into space (Instead of drawing through all loops on stitches, draw through so that the 1st loop on hook remains, yo and then draw through the last 2 loops on
	dc3tog into same st	double crochet 3 stitches together into same stitch
	dc3tog into sp	double crochet 3 stitches together into space
	dc5tog into same st	double crochet 5 stitches together into same stitch
	dc5tog into sp	double crochet 5 stitches together into space
	tr5tog into same st	treble crochet 5 stitches together into same stitch

## Popcorn



5-dc popcorn

5-dc popcorn into sp

5-hdc popcorn

5-tr popcorn

5 double crochet popcorn

5 double crochet popcorn into space

5 half-double crochet popcorn

5 treble popcorn

## Clusters



sc2tog

sc3tog skipping 2nd st

sc3tog

hdc2tog

hdc2tog into sp

hdc3tog

hdc3tog into sp

dc2tog

dc2tog into sp

dc3tog

dc3tog into sp

dc4tog

dc5tog

single crochet 2 stitches together

single crochet 3 stitches together skipping 2nd stitch

single crochet 3 stitches together

half-double crochet 2 stitches together

half-double crochet 2 stitches together into space

half-double crochet 3 stitches together

half-double crochet 3 stitches together into space

double crochet 2 stitches together

double crochet 2 stitches together into space

double crochet 3 stitches together

double crochet 3 stitches together into space

double crochet 4 stitches together

double crochet 5 stitches together

## Increases



2 sc into same st

3 sc into same st

(1 sc, ch 1, 1 sc) into same st

2 hdc into same st

2 hdc into sp

3 hdc into same st

3 hdc into sp

2 dc into same st

2 dc into same sp

(1 dc, ch 1, 1 dc) into same st

(1 dc, ch 1, 1 dc) into same sp

3 dc into same st

3 dc into same sp

2 single crochet into same stitch

3 single crochet into same stitch

(1 single crochet, 1 chain, 1 single crochet) into same stitch

2 half-double crochet into same stitch

2 half-double crochet into same space

3 half-double crochet into same stitch

3 half-double crochet into same space

2 double crochet into same stitch

2 double crochet into same space

(1 double crochet, 1 chain, 1 double crochet) into same stitch

(1 double crochet, 1 chain, 1 double crochet) into same space

3 double crochet into same stitch

3 double crochet into same space

## Shell (Fan)



5 dc into same st = 1 shell

5 double crochet in same stitch = 1 shell

## Variations of shell stitch



sc, \*3 ch, 3 dc into same st as 1st sc, sk next 3 sts and sc into 4th st, rep from \*



sc, \*3 ch, 3 dc into the post of 1st sc, sk next 3 sts and sc into 4th st, rep from \*



sc, \*3 hdc into the post of 1st sc, ch 1, sk next 2 sts and sc into 3rd st, rep from \*

## Crosses



\*sk 2 sts, dc in next st, working around dc just made dc in 2nd of the two skipped sts, ch 1, rep from \*



sk 2 sts, \*dc in next st, ch 1, working around dc just made dc in 1st of the two skipped sts, ch 1, sk 3 sts, rep from \*

## Post stitches



fp sc

Front Post Single Crochet



bp sc

Back Post Single Crochet



fp hdc

Front Post Half-double Crochet



bp hdc

Back Post Half-double Crochet



fp dc

Front Post Double Crochet



bp dc

Back Post Double Crochet

## Loop stitches



sc loop st

single crochet loop st



dc loop st

double crochet loop st